

PTPN12 Polyclonal Antibody

Catalog Number:E-AB-13541

Note: Centrifuge before opening to ensure complete recovery of vial contents.

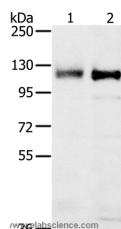
Description

Reactivity	Human,Mouse
Immunogen	Synthetic peptide of human PTPN12
Host	Rabbit
Isotype	IgG
Purification	Affinity purification
Conjugation	Unconjugated
Formulation	PBS with 0.05% sodium azide and 50% glycerol, PH7.4

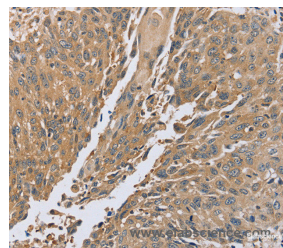
Applications Recommended Dilution

WB	1:200-1:1000
IHC	1:100-1:300

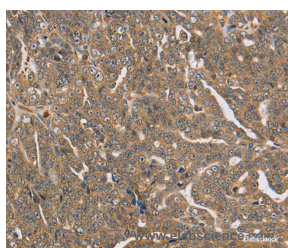
Data



Western Blot analysis of 231 and K562 cell using PTPN12 Polyclonal Antibody at dilution of 1:200
Calculated Mw:88kDa



Immunohistochemistry of paraffin-embedded Human lung cancer using PTPN12 Polyclonal Antibody at dilution of 1:45



Immunohistochemistry of paraffin-embedded Human cervical cancer using PTPN12 Polyclonal Antibody at dilution of 1:45

Preparation & Storage

Storage Store at -20°C. Avoid freeze / thaw cycles.

Background

The protein encoded by this gene is a member of the protein tyrosine phosphatase (PTP) family. PTPs are signaling molecules that regulate a variety of cellular processes including cell growth, differentiation, mitotic cycle, and oncogenic transformation. This PTP contains a C-terminal PEST motif, which serves as a protein-protein interaction domain, and may regulate protein intracellular half-life. This PTP was found to bind and dephosphorylate the product of the oncogene

For Research Use Only

A Reliable Research Partner in Life Science and Medicine

Toll-free: 1-888-852-8623

Web: www.elabscience.com

Tel: 1-832-243-6086

Email: techsupport@elabscience.com

Fax: 1-832-243-6017

PTPN12 Polyclonal Antibody

Catalog Number:E-AB-13541



c-ABL and thus may play a role in oncogenesis.

For Research Use Only

A Reliable Research Partner in Life Science and Medicine

Toll-free: 1-888-852-8623

Web: www.elabscience.com

Tel: 1-832-243-6086

Email: techsupport@elabscience.com

Fax: 1-832-243-6017