

# RAB8B Polyclonal Antibody

Catalog Number:E-AB-13546

**Note:** Centrifuge before opening to ensure complete recovery of vial contents.

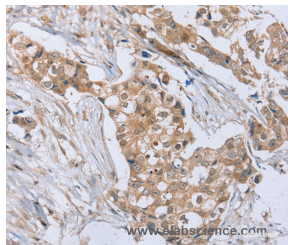
## Description

<b>Reactivity</b>	Human,Mouse,Rat
<b>Immunogen</b>	Synthetic peptide of human RAB8B
<b>Host</b>	Rabbit
<b>Isotype</b>	IgG
<b>Purification</b>	Affinity purification
<b>Conjugation</b>	Unconjugated
<b>Formulation</b>	PBS with 0.05% sodium azide and 50% glycerol, PH7.4

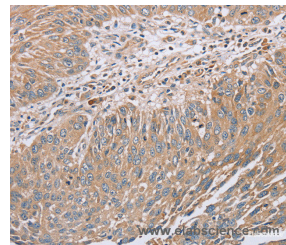
## Applications Recommended Dilution

<b>IHC</b>	1:30-1:150
------------	------------

## Data



Immunohistochemistry of paraffin-embedded Human breast cancer tissue using RAB8B Polyclonal Antibody at dilution 1:45



Immunohistochemistry of paraffin-embedded Human lung cancer tissue using RAB8B Polyclonal Antibody at dilution 1:45

## Preparation & Storage

**Storage** Store at -20°C. Avoid freeze / thaw cycles.

## Background

RAB proteins, like RAB8B, are low molecular mass monomeric GTPases that localize on the cytoplasmic surfaces of distinct membrane-bound organelles. RAB proteins function in intracellular vesicle transport by aiding in the docking and/or fusion of vesicles with their target membranes.

## For Research Use Only

A Reliable Research Partner in Life Science and Medicine

Toll-free: 1-888-852-8623

Web: [www.elabscience.com](http://www.elabscience.com)

Tel: 1-832-243-6086

Email: [techsupport@elabscience.com](mailto:techsupport@elabscience.com)

Fax: 1-832-243-6017