

RAB24 Polyclonal Antibody

Catalog Number:E-AB-13552



Note: Centrifuge before opening to ensure complete recovery of vial contents.

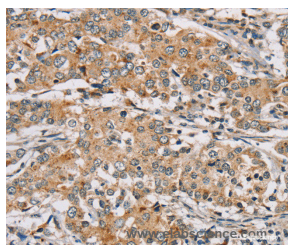
Description

Reactivity	Human,Mouse
Immunogen	Synthetic peptide of human RAB24
Host	Rabbit
Isotype	IgG
Purification	Affinity purification
Conjugation	Unconjugated
Formulation	PBS with 0.05% sodium azide and 50% glycerol, PH7.4

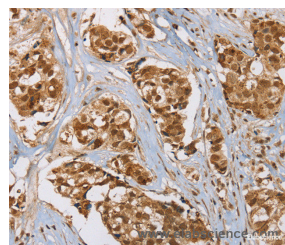
Applications Recommended Dilution

IHC	1:50-1:200
------------	------------

Data



Immunohistochemistry of paraffin-embedded Human liver cancer tissue using RAB24 Polyclonal Antibody at dilution 1:45



Immunohistochemistry of paraffin-embedded Human breast cancer tissue using RAB24 Polyclonal Antibody at dilution 1:45

Preparation & Storage

Storage	Store at -20°C. Avoid freeze / thaw cycles.
----------------	---

Background

RAB24 is a small GTPase of the Rab subfamily of Ras-related proteins that regulate intracellular protein trafficking. May be involved in autophagy-related processes. Unlike other Rab family members, does not interact with GDP dissociation inhibitors (GDIs), including ARHGDIA and ARHGDIB. Interacts with ZFYVE20.

For Research Use Only

A Reliable Research Partner in Life Science and Medicine

Toll-free: 1-888-852-8623

Web: www.elabsience.com

Tel: 1-832-243-6086

Email: techsupport@elabsience.com

Fax: 1-832-243-6017