

## NEMF Polyclonal Antibody

**Catalog No.** E-AB-13602

*Note:* Centrifuge before opening to ensure complete recovery of vial contents.

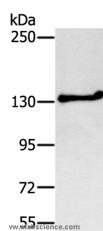
### Description

<b>Reactivity</b>	Human
<b>Immunogen</b>	Synthetic peptide of human NEMF
<b>Host</b>	Rabbit
<b>Isotype</b>	IgG
<b>Purification</b>	Affinity purification
<b>Conjugation</b>	Unconjugated
<b>Buffer</b>	PBS with 0.05% sodium azide and 50% glycerol, PH7.4

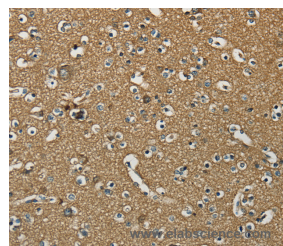
### Applications Recommended Dilution

<b>WB</b>	1:200-1:1000
<b>IHC</b>	1:25-1:100

### Data



Western Blot analysis of Jurkat cell using NEMF Polyclonal Antibody at dilution of 1:200  
**Calculated Mw:123kDa**



Immunohistochemistry of paraffin-embedded Human brain using NEMF Polyclonal Antibody at dilution of 1:30

### Preparation & Storage

**Storage** Store at -20°C. Avoid freeze / thaw cycles.

### Background

SDCCAG1, which called NY-CO-1, from a colon cancer cDNA library. The deduced 362-amino acid protein contains a nuclear targeting signal. Expressed in brain, heart, liver, lung, spleen, and skeletal muscle. Also expressed at lower levels in stomach and testis.

### For Research Use Only