

# SLC41A2 Polyclonal Antibody

Catalog Number:E-AB-13648

**Note:** Centrifuge before opening to ensure complete recovery of vial contents.

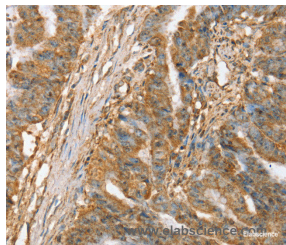
## Description

<b>Reactivity</b>	Human,Mouse
<b>Immunogen</b>	Synthetic peptide of human SLC41A3
<b>Host</b>	Rabbit
<b>Isotype</b>	IgG
<b>Purification</b>	Affinity purification
<b>Conjugation</b>	Unconjugated
<b>Formulation</b>	PBS with 0.05% sodium azide and 50% glycerol, PH7.4

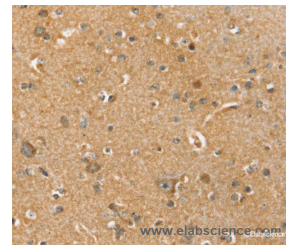
## Applications Recommended Dilution

<b>IHC</b>	1:40-1:150
------------	------------

## Data



Immunohistochemistry of paraffin-embedded Human esophagus cancer tissue using SLC41A2 Polyclonal Antibody at dilution 1:45



Immunohistochemistry of paraffin-embedded Human brain tissue using SLC41A2 Polyclonal Antibody at dilution 1:45

## Preparation & Storage

**Storage** Store at -20°C. Avoid freeze / thaw cycles.

## Background

SLC41A3 (solute carrier family 41 member 3) is a 507 amino acid multi-pass membrane protein that belongs to the SLC41A transporter family that includes SLC41A1 and SLC41A2. Localizing to the cell membrane, SLC41A3 contains ten transmembrane domains and is believed to function as a plasma-membrane cation transporter. Its other two family members, SLC41A1 and SLC41A2, have been characterized to function as magnesium transporters and are essential for maintaining magnesium homeostasis within the cell.

## For Research Use Only

A Reliable Research Partner in Life Science and Medicine

Toll-free: 1-888-852-8623

Web: [www.elabscience.com](http://www.elabscience.com)

Tel: 1-832-243-6086

Email: [techsupport@elabscience.com](mailto:techsupport@elabscience.com)

Fax: 1-832-243-6017