

## TAF15 Polyclonal Antibody

**Catalog No.** E-AB-13718

**Note:** Centrifuge before opening to ensure complete recovery of vial contents.

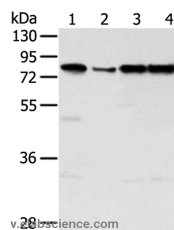
### Description

<b>Reactivity</b>	Human
<b>Immunogen</b>	Synthetic peptide of human TAF15
<b>Host</b>	Rabbit
<b>Isotype</b>	IgG
<b>Purification</b>	Affinity purification
<b>Conjugation</b>	Unconjugated
<b>Buffer</b>	PBS with 0.05% sodium azide and 50% glycerol, PH7.4

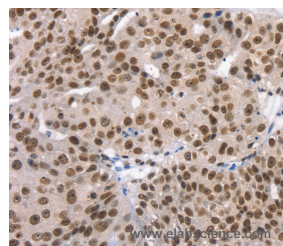
### Applications Recommended Dilution

<b>WB</b>	1:500-1:2000
<b>IHC</b>	1:25-1:100

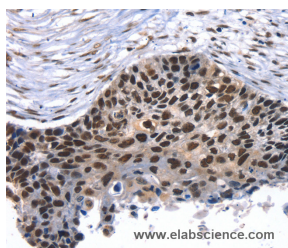
### Data



Western Blot analysis of Jurkat, hepg2, Raji and A431 cell using TAF15 Polyclonal Antibody at dilution of 1:450  
**Calculated Mw:62kDa**



Immunohistochemistry of paraffin-embedded Human breast cancer using TAF15 Polyclonal Antibody at dilution of 1:35



Immunohistochemistry of paraffin-embedded Human esophagus cancer using TAF15 Polyclonal Antibody at dilution of 1:35

### Preparation & Storage

**Storage** Store at -20°C. Avoid freeze / thaw cycles.

### For Research Use Only

## Background

This gene encodes a member of the TET family of RNA-binding proteins. The encoded protein plays a role in RNA polymerase II gene transcription as a component of a distinct subset of multi-subunit transcription initiation factor TFIID complexes. Translocations involving this gene play a role in acute leukemia and extraskeletal myxoid chondrosarcoma, and mutations in this gene may play a role in amyotrophic lateral sclerosis.