

## CASP2 Polyclonal Antibody

Catalog No. E-AB-13816

**Note:** Centrifuge before opening to ensure complete recovery of vial contents.

### Description

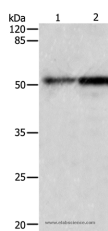
<b>Reactivity</b>	Human,Mouse,Rat
<b>Immunogen</b>	Recombinant protein of human CASP2
<b>Host</b>	Rabbit
<b>Isotype</b>	IgG
<b>Purification</b>	Affinity purification
<b>Conjugation</b>	Unconjugated
<b>Buffer</b>	PBS with 0.05% sodium azide and 50% glycerol, PH7.4

### Applications

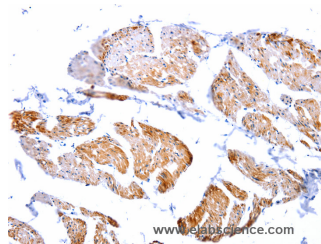
### Recommended Dilution

<b>WB</b>	1:1000-1:2000
<b>IHC</b>	1:100-1:300

### Data



Western Blot analysis of Human fetal kidney and lung tissue using CASP2 Polyclonal Antibody at dilution of 1:950  
**Calculated Mw:51kDa**



Immunohistochemistry of paraffin-embedded Human urinary bladder using CASP2 Polyclonal Antibody at dilution of 1:100

### Preparation & Storage

**Storage** Store at -20°C. Avoid freeze / thaw cycles.

### Background

This gene encodes a member of the cysteine-aspartic acid protease (caspase) family. Caspases mediate cellular apoptosis through the proteolytic cleavage of specific protein substrates. The encoded protein may function in stress-induced cell death pathways, cell cycle maintenance, and the suppression of tumorigenesis. Increased expression of this gene may play a role in neurodegenerative disorders including Alzheimer's disease, Huntington's disease and temporal lobe epilepsy. Alternatively spliced transcript variants encoding multiple isoforms have been observed for this gene.

### For Research Use Only