

## COX16 Polyclonal Antibody

**Catalog No.** E-AB-13842

*Note:* Centrifuge before opening to ensure complete recovery of vial contents.

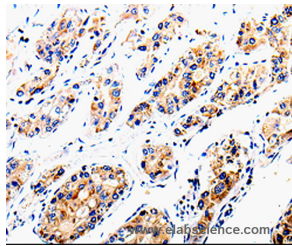
### Description

<b>Reactivity</b>	Human, Mouse
<b>Immunogen</b>	Recombinant protein of human COX16
<b>Host</b>	Rabbit
<b>Isotype</b>	IgG
<b>Purification</b>	Affinity purification
<b>Conjugation</b>	Unconjugated
<b>Buffer</b>	PBS with 0.05% sodium azide and 50% glycerol, PH7.4

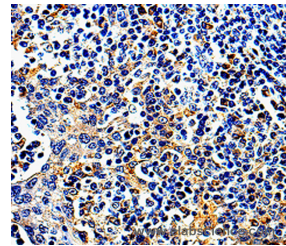
### Applications Recommended Dilution

<b>IHC</b>	1:25-1:100
------------	------------

### Data



Immunohistochemistry of paraffin-embedded Human liver cancer tissue using COX16 Polyclonal Antibody at dilution 1:50



Immunohistochemistry of paraffin-embedded Human tonsil tissue using COX16 Polyclonal Antibody at dilution 1:50

### Preparation & Storage

**Storage** Store at -20°C. Avoid freeze / thaw cycles.

### Background

This protein is encoded by COX16, corresponding to the previously uncharacterized open reading frame YJL003w of the yeast genome. COX16 was identified in studies of COX-deficient mutants previously assigned to complementation group G22 of a collection of yeast pet mutants. To determine its location, Cox16p was tagged with a Myc epitope at the C terminus.

### For Research Use Only