

ANXA8 Polyclonal Antibody

Catalog Number:E-AB-13905

Note: Centrifuge before opening to ensure complete recovery of vial contents.

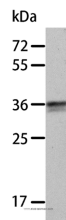
Description

Reactivity	Human
Immunogen	Recombinant protein of human ANXA8
Host	Rabbit
Isotype	IgG
Purification	Affinity purification
Conjugation	Unconjugated
Formulation	PBS with 0.05% sodium azide and 50% glycerol, PH7.4

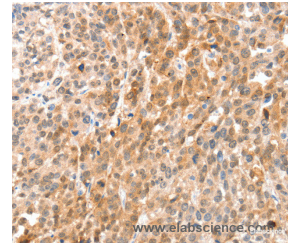
Applications Recommended Dilution

WB	1:200-1:1000
IHC	1:50-1:100

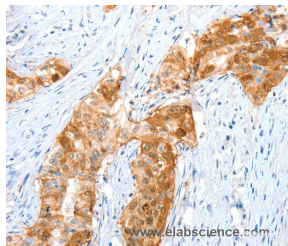
Data



Western Blot analysis of A549 cell using ANXA8 Polyclonal Antibody at dilution of 1:300
Calculated Mw:37kDa



Immunohistochemistry of paraffin-embedded Human esophagus cancer using ANXA8 Polyclonal Antibody at dilution of 1:35



Immunohistochemistry of paraffin-embedded Human cervical cancer using ANXA8 Polyclonal Antibody at dilution of 1:35

Preparation & Storage

Storage Store at -20°C. Avoid freeze / thaw cycles.

Background

This gene encodes a member of the annexin family of evolutionarily conserved Ca²⁺ and phospholipid binding proteins. The encoded protein may function as an anticoagulant that indirectly inhibits the thromboplastin-specific complex. Overexpression of this gene has been associated with acute myelocytic leukemia. A highly similar duplicated copy of this gene is found in close proximity on the long arm of chromosome 10.

For Research Use Only

A Reliable Research Partner in Life Science and Medicine

Toll-free: 1-888-852-8623

Web: www.elabscience.com

Tel: 1-832-243-6086

Email: techsupport@elabscience.com

Fax: 1-832-243-6017