

## BSA Polyclonal Antibody

**Catalog No.** E-AB-13934

*Note:* Centrifuge before opening to ensure complete recovery of vial contents.

### Description

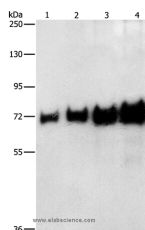
<b>Reactivity</b>	Bovine serum albumin
<b>Immunogen</b>	Bovine serum albumin, fraction V
<b>Host</b>	Rabbit
<b>Isotype</b>	IgG
<b>Purification</b>	Affinity purification
<b>Conjugation</b>	Unconjugated
<b>Buffer</b>	PBS with 0.05% sodium azide and 50% glycerol, PH7.4

### Applications

### Recommended Dilution

**WB** 1:1000-1:5000

### Data



Western Blot analysis of 0.05-0.4ug BSA using BSA Polyclonal Antibody at dilution of 1:1150  
**Calculated Mw:69kDa**

### Preparation & Storage

**Storage** Store at -20°C. Avoid freeze / thaw cycles.

### Background

Serum albumin, the main protein of plasma, has a good binding capacity for water, Ca<sup>2+</sup>, Na<sup>+</sup>, K<sup>+</sup>, fatty acids, hormones, bilirubin and drugs. Its main function is the regulation of the colloidal osmotic pressure of blood. Major zinc transporter in plasma, typically binds about 80% of all plasma zinc.

### For Research Use Only