

## CA1 Polyclonal Antibody

Catalog No. E-AB-13965

**Note:** Centrifuge before opening to ensure complete recovery of vial contents.

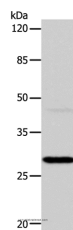
### Description

<b>Reactivity</b>	Human,Mouse,Rat
<b>Immunogen</b>	Recombinant protein of human CA1
<b>Host</b>	Rabbit
<b>Isotype</b>	IgG
<b>Purification</b>	Affinity purification
<b>Conjugation</b>	Unconjugated
<b>Buffer</b>	PBS with 0.05% sodium azide and 50% glycerol, PH7.4

### Applications Recommended Dilution

**WB** 1:500-1:2000

### Data



Western Blot analysis of Mouse liver tissue using CA1  
Polyclonal Antibody at dilution of 1:450  
**Calculated Mw:29kDa**

### Preparation & Storage

**Storage** Store at -20°C. Avoid freeze / thaw cycles.

### Background

Carbonic anhydrases (CAs) are a large family of zinc metalloenzymes that catalyze the reversible hydration of carbon dioxide. They participate in a variety of biological processes, including respiration, calcification, acid-base balance, bone resorption, and the formation of aqueous humor, cerebrospinal fluid, saliva, and gastric acid. They show extensive diversity in tissue distribution and in their subcellular localization. CA1 is closely linked to CA2 and CA3 genes on chromosome 8, and it encodes a cytosolic protein which is found at the highest level in erythrocytes. Variants of this gene have been described in some populations. Multiple alternatively spliced variants, encoding the same protein, have been identified. Transcript variants of CA1 utilizing alternative polyA\_sites have been described in literature.

### For Research Use Only