

Cathepsin B Polyclonal Antibody

Catalog Number:E-AB-13973

1 Publications



Note: Centrifuge before opening to ensure complete recovery of vial contents.

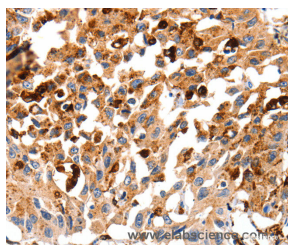
Description

| | |
|---------------------|---|
| Reactivity | Human,Mouse,Rat |
| Immunogen | Recombinant protein of human CTSB |
| Host | Rabbit |
| Isotype | IgG |
| Purification | Affinity purification |
| Conjugation | Unconjugated |
| Formulation | PBS with 0.05% sodium azide and 50% glycerol, PH7.4 |

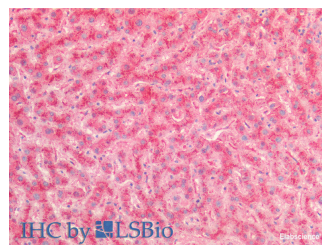
Applications Recommended Dilution

| | |
|------------|------------|
| IHC | 1:50-1:100 |
|------------|------------|

Data



Immunohistochemistry of paraffin-embedded Human lung cancer tissue using Cathepsin B Polyclonal Antibody at dilution 1:35



Immunohistochemistry of paraffin-embedded Human Liver using Cathepsin B Polyclonal Antibody at dilution of 1:100(Elabscience® Product Detected by Lifespan).

Preparation & Storage

| | |
|----------------|---|
| Storage | Store at -20°C. Avoid freeze / thaw cycles. |
|----------------|---|

Background

The protein encoded by this gene is a lysosomal cysteine proteinase composed of a dimer of disulfide-linked heavy and light chains, both produced from a single protein precursor. It is also known as amyloid precursor protein secretase and is involved in the proteolytic processing of amyloid precursor protein (APP). Incomplete proteolytic processing of APP has been suggested to be a causative factor in Alzheimer disease, the most common cause of dementia. Overexpression of the encoded protein, which is a member of the peptidase C1 family, has been associated with esophageal adenocarcinoma and other tumors. At least five transcript variants encoding the same protein have been found for this gene.

For Research Use Only

A Reliable Research Partner in Life Science and Medicine

Toll-free: 1-888-852-8623

Web: www.elabscience.com

Tel: 1-832-243-6086

Email: techsupport@elabscience.com

Fax: 1-832-243-6017