

CBX6 Polyclonal Antibody

Catalog Number:E-AB-13979



Note: Centrifuge before opening to ensure complete recovery of vial contents.

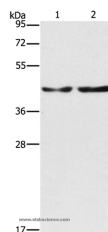
Description

Reactivity	Human
Immunogen	Recombinant protein of human CBX6
Host	Rabbit
Isotype	IgG
Purification	Affinity purification
Conjugation	Unconjugated
Formulation	PBS with 0.05% sodium azide and 50% glycerol, PH7.4

Applications Recommended Dilution

WB	1:500-1:2000
-----------	--------------

Data



Western Blot analysis of Hela and 293T cell using CBX6 Polyclonal Antibody at dilution of 1:600
Calculated Mw:44kDa

Preparation & Storage

Storage Store at -20°C. Avoid freeze / thaw cycles.

Background

CBX6 (chromobox protein homolog 6) is a 412 amino acid protein that is a component of the chromatin-associated PcG complex. Through interaction with PcG, CBX6 modifies chromatin and maintains the transcriptionally repressive state of genes. Members of the chromobox domain protein family are characterized by the presence of a 37 amino acid chromobox (CHRromatin Organization MODifier) domain. This domain plays a mechanistic role in targeting chromodomain proteins to specific regions of the nucleus.

For Research Use Only

A Reliable Research Partner in Life Science and Medicine

Toll-free: 1-888-852-8623

Web: www.elabscience.com

Tel: 1-832-243-6086

Email: techsupport@elabscience.com

Fax: 1-832-243-6017