

## RDX Polyclonal Antibody

**Catalog No.** E-AB-14074

**Note:** Centrifuge before opening to ensure complete recovery of vial contents.

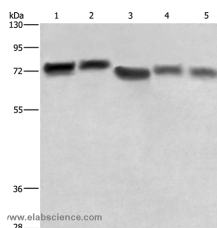
### Description

<b>Reactivity</b>	Human, Mouse
<b>Immunogen</b>	Recombinant protein of human RDX
<b>Host</b>	Rabbit
<b>Isotype</b>	IgG
<b>Purification</b>	Affinity purification
<b>Conjugation</b>	Unconjugated
<b>Buffer</b>	PBS with 0.05% sodium azide and 50% glycerol, PH7.4

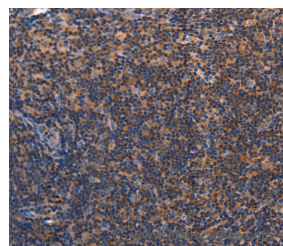
### Applications Recommended Dilution

<b>WB</b>	1:500-1:2000
<b>IHC</b>	1:100-1:300

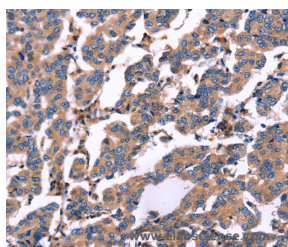
### Data



Western Blot analysis of Hela cell and Human brain tissue, 293T cell, Human hepatocellular carcinoma tissue and NIH/3T3 cell using RDX Polyclonal Antibody at dilution of 1:600  
**Calculated Mw:69kDa**



Immunohistochemistry of paraffin-embedded Human tonsil using RDX Polyclonal Antibody at dilution of 1:60



Immunohistochemistry of paraffin-embedded Human breast cancer using RDX Polyclonal Antibody at dilution of 1:60

### Preparation & Storage

### For Research Use Only

**Storage**                      Store at -20°C. Avoid freeze / thaw cycles.

## Background

Radixin is a cytoskeletal protein that may be important in linking actin to the plasma membrane. It is highly similar in sequence to both ezrin and moesin. The radixin gene has been localized by fluorescence in situ hybridization to 11q23. A truncated version representing a pseudogene (RDXP2) was assigned to Xp21.3. Another pseudogene that seemed to lack introns (RDXP1) was mapped to 11p by Southern and PCR analyses. Multiple alternatively spliced transcript variants encoding different isoforms have been found for this gene.

---

## For Research Use Only