

## GNA11 Polyclonal Antibody

**Catalog No.** E-AB-14087

*Note:* Centrifuge before opening to ensure complete recovery of vial contents.

### Description

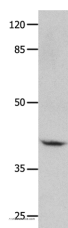
<b>Reactivity</b>	Human,Mouse,Rat
<b>Immunogen</b>	Recombinant protein of human GNA11
<b>Host</b>	Rabbit
<b>Isotype</b>	IgG
<b>Purification</b>	Affinity purification
<b>Conjugation</b>	Unconjugated
<b>Buffer</b>	PBS with 0.05% sodium azide and 50% glycerol, PH7.4

### Applications

### Recommended Dilution

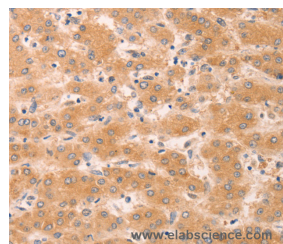
<b>WB</b>	1:500-1:2000
<b>IHC</b>	1:50-1:200

### Data

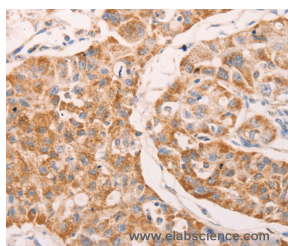


Western Blot analysis of Human leiomyosarcoma tissue using GNA11 Polyclonal Antibody at dilution of 1:450

**Calculated Mw:42kDa**



Immunohistochemistry of paraffin-embedded Human liver cancer using GNA11 Polyclonal Antibody at dilution of 1:40



Immunohistochemistry of paraffin-embedded Human lung cancer using GNA11 Polyclonal Antibody at dilution of 1:40

### Preparation & Storage

**Storage** Store at -20°C. Avoid freeze / thaw cycles.

### For Research Use Only

## Background

Guanine nucleotide-binding protein subunit alpha-11 is a protein that in humans is encoded by the GNA11 gene. Guanine nucleotide-binding proteins (G proteins) are involved as modulators or transducers in various transmembrane signaling systems. Acts as an activator of phospholipase C.