

## CFHR1 Polyclonal Antibody

**Catalog No.** E-AB-14120

*Note:* Centrifuge before opening to ensure complete recovery of vial contents.

### Description

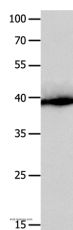
<b>Reactivity</b>	Human
<b>Immunogen</b>	Recombinant protein of human CFHR1
<b>Host</b>	Rabbit
<b>Isotype</b>	IgG
<b>Purification</b>	Affinity purification
<b>Conjugation</b>	Unconjugated
<b>Buffer</b>	PBS with 0.05% sodium azide and 50% glycerol, PH7.4

### Applications

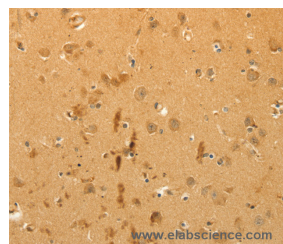
### Recommended Dilution

<b>WB</b>	1:500-1:2000
<b>IHC</b>	1:50-1:200

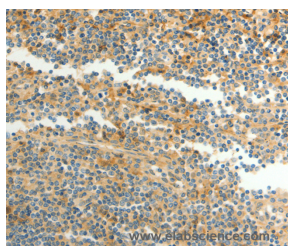
### Data



Western Blot analysis of Human liver cancer tissue using CFHR1 Polyclonal Antibody at dilution of 1:300  
**Calculated Mw:38kDa**



Immunohistochemistry of paraffin-embedded Human brain using CFHR1 Polyclonal Antibody at dilution of 1:40



Immunohistochemistry of paraffin-embedded Human tonsil using CFHR1 Polyclonal Antibody at dilution of 1:40

### Preparation & Storage

**Storage** Store at -20°C. Avoid freeze / thaw cycles.

### For Research Use Only

## Background

This gene encodes a secreted protein belonging to the complement factor H protein family. It binds to *Pseudomonas aeruginosa* elongation factor Tuf together with plasminogen, which is proteolytically activated. It is proposed that Tuf acts as a virulence factor by acquiring host proteins to the pathogen surface, controlling complement, and facilitating tissue invasion. Mutations in this gene are associated with an increased risk of atypical hemolytic-uremic syndrome.