

## KLK1 Polyclonal Antibody

Catalog No. E-AB-14179

**Note:** Centrifuge before opening to ensure complete recovery of vial contents.

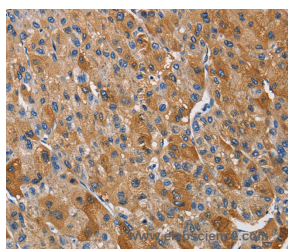
### Description

<b>Reactivity</b>	Human
<b>Immunogen</b>	Recombinant protein of human KLK1
<b>Host</b>	Rabbit
<b>Isotype</b>	IgG
<b>Purification</b>	Affinity purification
<b>Conjugation</b>	Unconjugated
<b>Buffer</b>	PBS with 0.05% sodium azide and 50% glycerol, PH7.4

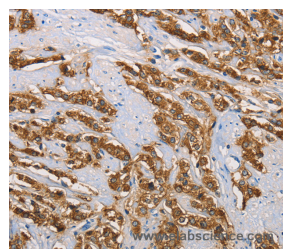
### Applications Recommended Dilution

**IHC** 1:50-1:200

### Data



Immunohistochemistry of paraffin-embedded Human liver cancer tissue using KLK1 Polyclonal Antibody at dilution 1:40



Immunohistochemistry of paraffin-embedded Human prostate cancer tissue using KLK1 Polyclonal Antibody at dilution 1:40

### Preparation & Storage

**Storage** Store at -20°C. Avoid freeze / thaw cycles.

### Background

Kallikreins are a subgroup of serine proteases having diverse physiological functions. Growing evidence suggests that many kallikreins are implicated in carcinogenesis and some have potential as novel cancer and other disease biomarkers. This gene is one of the fifteen kallikrein subfamily members located in a cluster on chromosome 19. This protein is functionally conserved in its capacity to release the vasoactive peptide, Lys-bradykinin, from low molecular weight kininogen.

### For Research Use Only