

LRRK2 Polyclonal Antibody

Catalog No. E-AB-14196

Note: Centrifuge before opening to ensure complete recovery of vial contents.

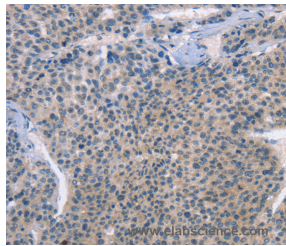
Description

Reactivity	Human
Immunogen	Recombinant protein of human LRRK2
Host	Rabbit
Isotype	IgG
Purification	Affinity purification
Conjugation	Unconjugated
Buffer	PBS with 0.05% sodium azide and 50% glycerol, PH7.4

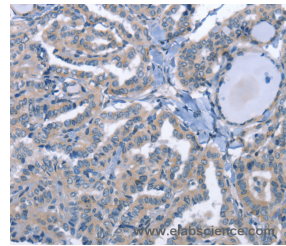
Applications Recommended Dilution

IHC 1:25-1:100

Data



Immunohistochemistry of paraffin-embedded Human liver cancer tissue using LRRK2 Polyclonal Antibody at dilution 1:30



Immunohistochemistry of paraffin-embedded Human thyroid cancer tissue using LRRK2 Polyclonal Antibody at dilution 1:30

Preparation & Storage

Storage Store at -20°C. Avoid freeze / thaw cycles.

Background

This gene is a member of the leucine-rich repeat kinase family and encodes a protein with an ankryin repeat region, a leucine-rich repeat (LRR) domain, a kinase domain, a DFG-like motif, a RAS domain, a GTPase domain, a MLK-like domain, and a WD40 domain. The protein is present largely in the cytoplasm but also associates with the mitochondrial outer membrane. Mutations in this gene have been associated with Parkinson disease-8.

For Research Use Only