

MAD1L1 Polyclonal Antibody

Catalog No. E-AB-14200

Note: Centrifuge before opening to ensure complete recovery of vial contents.

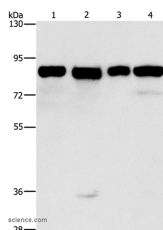
Description

Reactivity	Human, Mouse
Immunogen	Recombinant protein of human MAD1L1
Host	Rabbit
Isotype	IgG
Purification	Affinity purification
Conjugation	Unconjugated
Buffer	PBS with 0.05% sodium azide and 50% glycerol, PH7.4

Applications Recommended Dilution

WB 1:500-1:2000

Data



Western Blot analysis of HeLa, 231, hepG2 and Raji cell using MAD1L1 Polyclonal Antibody at dilution of 1:500

Calculated Mw:83kDa

Preparation & Storage

Storage Store at -20°C. Avoid freeze / thaw cycles.

Background

MAD1L1 is a component of the mitotic spindle-assembly checkpoint that prevents the onset of anaphase until all chromosome are properly aligned at the metaphase plate. MAD1L1 functions as a homodimer and interacts with Human, Mouse AD2L1. MAD1L1 may play a role in cell cycle control and tumor suppression. Three transcript variants encoding the same protein have been found for this gene.

For Research Use Only