

MYL2 Polyclonal Antibody

Catalog No. E-AB-14231

Note: Centrifuge before opening to ensure complete recovery of vial contents.

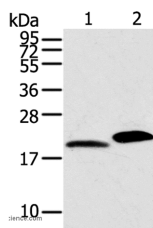
Description

| | |
|---------------------|---|
| Reactivity | Human,Mouse,Rat |
| Immunogen | Recombinant protein of human MYL2 |
| Host | Rabbit |
| Isotype | IgG |
| Purification | Affinity purification |
| Conjugation | Unconjugated |
| Buffer | PBS with 0.05% sodium azide and 50% glycerol, PH7.4 |

Applications Recommended Dilution

WB 1:500-1:2000

Data



Western Blot analysis of Mouse skin and heart tissue using MYL2 Polyclonal Antibody at dilution of 1:800

Calculated Mw:19kDa

Preparation & Storage

Storage Store at -20°C. Avoid freeze / thaw cycles.

Background

This gene encodes the regulatory light chain associated with cardiac myosin beta (or slow) heavy chain. Ca⁺ triggers the phosphorylation of regulatory light chain that in turn triggers contraction. Mutations in this gene are associated with mid-left ventricular chamber type hypertrophic cardiomyopathy.

For Research Use Only