

PVALB Polyclonal Antibody

Catalog No. E-AB-14328

Note: Centrifuge before opening to ensure complete recovery of vial contents.

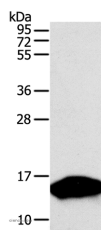
Description

Reactivity	Human,Mouse,Rat
Immunogen	Recombinant protein of human PVALB
Host	Rabbit
Isotype	IgG
Purification	Affinity purification
Conjugation	Unconjugated
Buffer	PBS with 0.05% sodium azide and 50% glycerol, PH7.4

Applications Recommended Dilution

WB 1:500-1:2000

Data



Western Blot analysis of Human fetal brain tissue using
PVALB Polyclonal Antibody at dilution of 1:300
Calculated Mw:12kDa

Preparation & Storage

Storage Store at -20°C. Avoid freeze / thaw cycles.

Background

Parvalbumin is a calcium-binding albumin protein with low molecular weight (typically 9-11 kDa). It has three EF hand motifs and is structurally related to calmodulin and troponin C. Parvalbumin is localised in fast-contracting muscles, where its levels are highest, and in the brain and some endocrine tissues. Parvalbumin is a small, stable protein containing EF-hand type calcium binding sites. It is involved in calcium signaling. Typically, this protein is broken into three domains, domains AB, CD and EF, each individually containing a helix-loop-helix motif.

For Research Use Only