

## RPAP3 Polyclonal Antibody

**Catalog No.** E-AB-14363

*Note:* Centrifuge before opening to ensure complete recovery of vial contents.

### Description

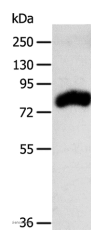
<b>Reactivity</b>	Human,Mouse
<b>Immunogen</b>	Recombinant protein of human RPAP3
<b>Host</b>	Rabbit
<b>Isotype</b>	IgG
<b>Purification</b>	Affinity purification
<b>Conjugation</b>	Unconjugated
<b>Buffer</b>	PBS with 0.05% sodium azide and 50% glycerol, PH7.4

### Applications

### Recommended Dilution

**WB** 1:500-1:2000

### Data



Western Blot analysis of Mouse kidney tissue using  
RPAP3 Polyclonal Antibody at dilution of 1:400  
**Calculated Mw:76kDa**

### Preparation & Storage

**Storage** Store at -20°C. Avoid freeze / thaw cycles.

### Background

This gene encodes an RNA polymerase II-associated protein. The encoded protein may function in transcriptional regulation and may also regulate apoptosis. Alternatively spliced transcript variants have been described. Forms an interface between the RNA polymerase II enzyme and chaperone/scaffolding protein, suggesting that it is required to connect RNA polymerase II to regulators of protein complex formation.

### For Research Use Only