

SPAG5 Polyclonal Antibody

Catalog No. E-AB-14365

Note: Centrifuge before opening to ensure complete recovery of vial contents.

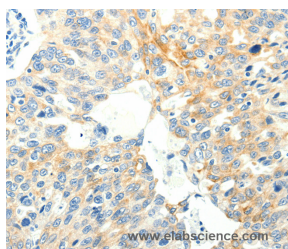
Description

Reactivity	Human, Mouse
Immunogen	Recombinant protein of human SPAG5
Host	Rabbit
Isotype	IgG
Purification	Affinity purification
Conjugation	Unconjugated
Buffer	PBS with 0.05% sodium azide and 50% glycerol, PH7.4

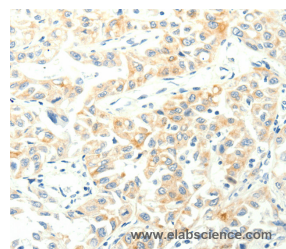
Applications Recommended Dilution

IHC 1:25-1:100

Data



Immunohistochemistry of paraffin-embedded Human ovarian cancer tissue using SPAG5 Polyclonal Antibody at dilution 1:35



Immunohistochemistry of paraffin-embedded Human lung cancer tissue using SPAG5 Polyclonal Antibody at dilution 1:35

Preparation & Storage

Storage Store at -20°C. Avoid freeze / thaw cycles.

Background

Sperm-associated antigen 5 is a protein that in humans is encoded by the SPAG5 gene. This gene encodes a protein associated with the mitotic spindle apparatus. The encoded protein may be involved in the functional and dynamic regulation of mitotic spindles. Essential component of the mitotic spindle required for normal chromosome segregation and progression into anaphase. Required for chromosome alignment, normal timing of sister chromatid segregation, and maintenance of spindle pole architecture. The astrin (SPAG5)-kinastrin (SKAP) complex promotes stable microtubule-kinetochore attachments.

For Research Use Only