

## SYT17 Polyclonal Antibody

**Catalog No.** E-AB-14377

*Note:* Centrifuge before opening to ensure complete recovery of vial contents.

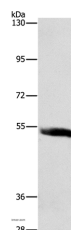
### Description

<b>Reactivity</b>	Human,Mouse,Rat
<b>Immunogen</b>	Recombinant protein of human SYT17
<b>Host</b>	Rabbit
<b>Isotype</b>	IgG
<b>Purification</b>	Affinity purification
<b>Conjugation</b>	Unconjugated
<b>Buffer</b>	PBS with 0.05% sodium azide and 50% glycerol, PH7.4

### Applications Recommended Dilution

**WB** 1:200-1:1000

### Data



Western Blot analysis of Human prostate tissue using SYT17 Polyclonal Antibody at dilution of 1:450  
**Calculated Mw:54kDa**

### Preparation & Storage

**Storage** Store at -20°C. Avoid freeze / thaw cycles.

### Background

Synaptotagmin XVII (SytXVII), also known as Synaptotagmin-17 (SYT17) or Protein B/K, is a 474 amino acid peripheral membrane protein that belongs to the Synaptotagmin family and contains two C2 domains. While expressed abundantly in brain (frontal and temporal lobes, hippocampus, hypothalamus, amygdala, substantia nigra and pituitary), kidney and prostate, Synaptotagmin XVII is also expressed in fetal brain, kidney and lung.

### For Research Use Only