

SPATA17 Polyclonal Antibody

Catalog No. E-AB-14379

Note: Centrifuge before opening to ensure complete recovery of vial contents.

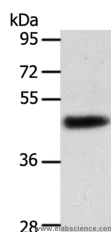
Description

Reactivity	Human
Immunogen	Recombinant protein of human SPATA17
Host	Rabbit
Isotype	IgG
Purification	Affinity purification
Conjugation	Unconjugated
Buffer	PBS with 0.05% sodium azide and 50% glycerol, PH7.4

Applications Recommended Dilution

WB 1:200-1:1000

Data



Western Blot analysis of Human liver cancer tissue using SPATA17 Polyclonal Antibody at dilution of 1:400

Calculated Mw:43kDa

Preparation & Storage

Storage Store at -20°C. Avoid freeze / thaw cycles.

Background

Spata17 gene, which called MSR11, by digital differential display of ESTs found only in testis. The deduced 292-amino acid protein was considered to be a member of the family of calmodulin (CaM)-binding proteins because it contained 3 short CaM-binding motifs containing conserved ile and gln residues (IQ motif). Spata17 protein was most abundant in the cytoplasm of round spermatids and elongating spermatids within seminiferous tubules of the adult testis. Expression gradually decreased in the manipulated testis of animals that underwent experimental unilateral cryptorchidism. Transient transfection experiments with a Spata17 expression construct in cultured spermatogonia GC-1 cells indicated that Spata17 accelerated apoptosis in a dose-dependent manner.

For Research Use Only