

MAP4K3 Polyclonal Antibody

Catalog No. E-AB-14391

Note: Centrifuge before opening to ensure complete recovery of vial contents.

Description

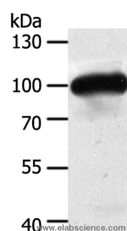
Reactivity	Human, Mouse, Rat
Immunogen	Recombinant protein of human MAP4K3
Host	Rabbit
Isotype	IgG
Purification	Affinity purification
Conjugation	Unconjugated
Buffer	PBS with 0.05% sodium azide and 50% glycerol, PH7.4

Applications

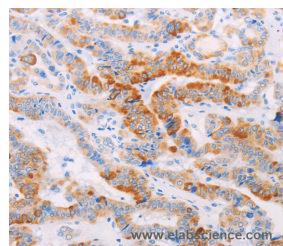
Recommended Dilution

WB	1:500-1:2000
IHC	1:25-1:100

Data



Western Blot analysis of Mouse heart tissue using MAP4K3 Polyclonal Antibody at dilution of 1:400
Calculated Mw:101kDa



Immunohistochemistry of paraffin-embedded Human thyroid cancer using MAP4K3 Polyclonal Antibody at dilution of 1:30

Preparation & Storage

Storage Store at -20°C. Avoid freeze / thaw cycles.

Background

This gene encodes a member of the mitogen-activated protein kinase kinase kinase kinase family. The encoded protein activates key effectors in cell signalling, among them c-Jun. Alternatively spliced transcripts encoding multiple isoforms have been observed for this gene. May play a role in the response to environmental stress. Appears to act upstream of the JUN N-terminal pathway. Ubiquitously expressed in all tissues examined, with high levels in heart, brain, placenta, skeletal muscle, kidney and pancreas and lower levels in lung and liver.

For Research Use Only