

## AKAP8L Polyclonal Antibody

**Catalog No.** E-AB-14527

*Note:* Centrifuge before opening to ensure complete recovery of vial contents.

### Description

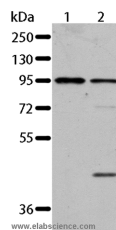
<b>Reactivity</b>	Human,Mouse
<b>Immunogen</b>	Recombinant protein of human AKAP8L
<b>Host</b>	Rabbit
<b>Isotype</b>	IgG
<b>Purification</b>	Affinity purification
<b>Conjugation</b>	Unconjugated
<b>Buffer</b>	PBS with 0.05% sodium azide and 50% glycerol, PH7.4

### Applications

### Recommended Dilution

**WB** 1:200-1:1000

### Data



Western Blot analysis of Jurkat and 293T cell using  
AKAP8L Polyclonal Antibody at dilution of 1:84  
**Calculated Mw:72kDa**

### Preparation & Storage

**Storage** Store at -20°C. Avoid freeze / thaw cycles.

### Background

A-kinase anchor protein 8-like is an enzyme that in humans is encoded by the AKAP8L gene. Could play a role in constitutive transport element (CTE)-mediated gene expression. Does not seem to be implicated in the binding of regulatory subunit II of PKA. May be involved in nuclear envelope breakdown and chromatin condensation. May regulate the initiation phase of DNA replication when associated with TMPO-beta.

### For Research Use Only