

AKR1B10 Polyclonal Antibody

Catalog No. E-AB-14529

Note: Centrifuge before opening to ensure complete recovery of vial contents.

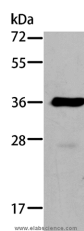
Description

Reactivity	Human
Immunogen	Recombinant protein of human AKR1B10
Host	Rabbit
Isotype	IgG
Purification	Affinity purification
Conjugation	Unconjugated
Buffer	PBS with 0.05% sodium azide and 50% glycerol, PH7.4

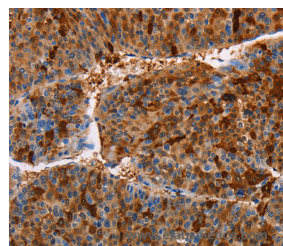
Applications Recommended Dilution

WB	1:200-1:1000
IHC	1:25-1:100

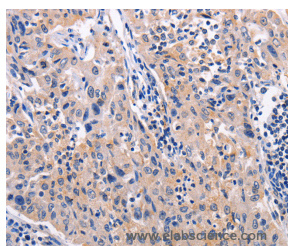
Data



Western Blot analysis of A549 cell using AKR1B10 Polyclonal Antibody at dilution of 1:184
Calculated Mw:36kDa



Immunohistochemistry of paraffin-embedded Human liver cancer using AKR1B10 Polyclonal Antibody at dilution of 1:30



Immunohistochemistry of paraffin-embedded Human lung cancer using AKR1B10 Polyclonal Antibody at dilution of 1:30

Preparation & Storage

Storage Store at -20°C. Avoid freeze / thaw cycles.

Background

For Research Use Only

This gene encodes a member of the aldo/keto reductase superfamily, which consists of more than 40 known enzymes and proteins. This member can efficiently reduce aliphatic and aromatic aldehydes, and it is less active on hexoses. It is highly expressed in adrenal gland, small intestine, and colon, and may play an important role in liver carcinogenesis.