

## ALDH6A1 Polyclonal Antibody

**Catalog No.** E-AB-14537

*Note:* Centrifuge before opening to ensure complete recovery of vial contents.

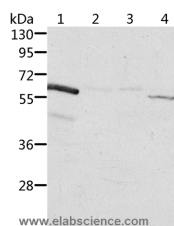
### Description

<b>Reactivity</b>	Human,Mouse,Rat
<b>Immunogen</b>	Recombinant protein of human ALDH6A1
<b>Host</b>	Rabbit
<b>Isotype</b>	IgG
<b>Purification</b>	Affinity purification
<b>Conjugation</b>	Unconjugated
<b>Buffer</b>	PBS with 0.05% sodium azide and 50% glycerol, PH7.4

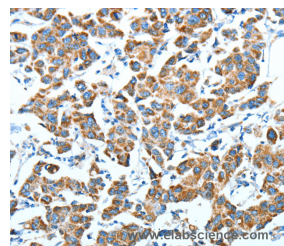
### Applications Recommended Dilution

<b>WB</b>	1:200-1:1000
<b>IHC</b>	1:50-1:200

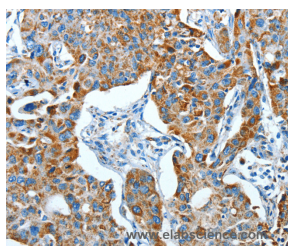
### Data



Western Blot analysis of Rat kidney and Human fetal kidney tissue, Jurkat and K562 cell using ALDH6A1 Polyclonal Antibody at dilution of 1:450  
**Calculated Mw:58kDa**



Immunohistochemistry of paraffin-embedded Human breast cancer using ALDH6A1 Polyclonal Antibody at dilution of 1:45



Immunohistochemistry of paraffin-embedded Human lung cancer using ALDH6A1 Polyclonal Antibody at dilution of 1:45

### Preparation & Storage

**Storage** Store at -20°C. Avoid freeze / thaw cycles.

### For Research Use Only

## Background

This protein belongs to the aldehyde dehydrogenases family of proteins. This enzyme plays a role in the valine and pyrimidine catabolic pathways. The product of this gene, a mitochondrial methylmalonate semialdehyde dehydrogenase, catalyzes the irreversible oxidative decarboxylation of malonate and methylmalonate semialdehydes to acetyl- and propionyl-CoA. Methylmalonate semialdehyde dehydrogenase deficiency is characterized by elevated beta-alanine, 3-hydroxypropionic acid, and both isomers of 3-amino and 3-hydroxyisobutyric acids in urine organic acids.

---

## For Research Use Only