

AUP1 Polyclonal Antibody

Catalog No. E-AB-14564

Note: Centrifuge before opening to ensure complete recovery of vial contents.

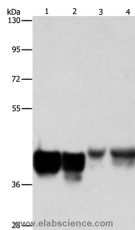
Description

Reactivity	Human, Mouse, Rat
Immunogen	Recombinant protein of human AUP1
Host	Rabbit
Isotype	IgG
Purification	Affinity purification
Conjugation	Unconjugated
Buffer	PBS with 0.05% sodium azide and 50% glycerol, PH7.4

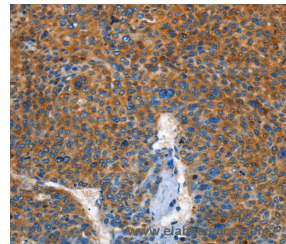
Applications Recommended Dilution

WB	1:500-1:2000
IHC	1:50-1:200

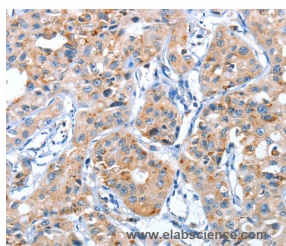
Data



Western Blot analysis of HeLa and 293T cell, Mouse liver tissue and NIH/3T3 cell using AUP1 Polyclonal Antibody at dilution of 1:500
Calculated Mw:53kDa



Immunohistochemistry of paraffin-embedded Human liver cancer using AUP1 Polyclonal Antibody at dilution of 1:50



Immunohistochemistry of paraffin-embedded Human lung cancer using AUP1 Polyclonal Antibody at dilution of 1:50

Preparation & Storage

Storage Store at -20°C. Avoid freeze / thaw cycles.

For Research Use Only

Background

This gene encodes a protein that contains a domain with homology to the ancient conserved region of the archain 1 gene and a domain that may be involved in binding ubiquitin-conjugating enzymes. The protein encoded by this gene has been shown to bind to the conserved membrane-proximal sequence of the cytoplasmic tail of integrin alpha(IIb) subunits. These subunits play a crucial role in the integrin alpha(IIb)beta(3) inside-out signalling in platelets and megakaryocytes that leads to platelet aggregation and thrombus formation. This gene overlaps the gene for mitochondrial serine protease 25.