

## ATG10 Polyclonal Antibody

**Catalog No.** E-AB-14581

**Note:** Centrifuge before opening to ensure complete recovery of vial contents.

### Description

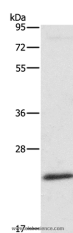
<b>Reactivity</b>	Human,Mouse
<b>Immunogen</b>	Recombinant protein of human ATG10
<b>Host</b>	Rabbit
<b>Isotype</b>	IgG
<b>Purification</b>	Affinity purification
<b>Conjugation</b>	Unconjugated
<b>Buffer</b>	PBS with 0.05% sodium azide and 50% glycerol, PH7.4

### Applications

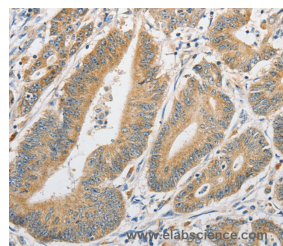
### Recommended Dilution

**WB 1:200-1:1000,**  
**IHC 1:50-1:200**

### Data



Western Blot analysis of Mouse liver tissue using ATG10 Polyclonal Antibody at dilution of 1:500  
**Calculated Mw:25kDa**



Immunohistochemistry of paraffin-embedded Human colon cancer using ATG10 Polyclonal Antibody at dilution of 1:60

### Preparation & Storage

**Storage** Store at -20°C. Avoid freeze / thaw cycles.

### Background

Autophagy is a process for the bulk degradation of cytosolic compartments by lysosomes. ATG10 is an E2-like enzyme involved in 2 ubiquitin-like modifications essential for autophagosome formation: ATG12 (MIM 609608)-ATG5 (MIM 604261) conjugation and modification of a soluble form of MAP-LC3 (MAP1LC3A; MIM 601242), a homolog of yeast Apg8, to a membrane-bound form.

### For Research Use Only