

## ATG3 Polyclonal Antibody

Catalog No. E-AB-14582

**Note:** Centrifuge before opening to ensure complete recovery of vial contents.

### Description

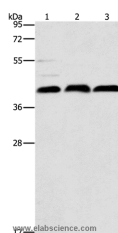
<b>Reactivity</b>	Human, Mouse, Rat
<b>Immunogen</b>	Recombinant protein of human ATG3
<b>Host</b>	Rabbit
<b>Isotype</b>	IgG
<b>Purification</b>	Affinity purification
<b>Conjugation</b>	Unconjugated
<b>Buffer</b>	PBS with 0.05% sodium azide and 50% glycerol, PH7.4

### Applications

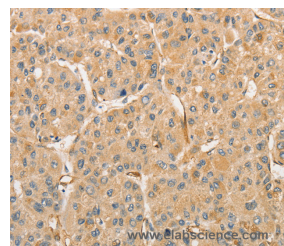
### Recommended Dilution

**WB 1:500-1:2000,**  
**IHC 1:25-1:100**

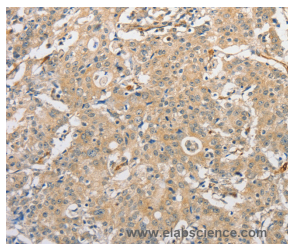
### Data



Western Blot analysis of K562 cell, Mouse kidney tissue and Raji cell using ATG3 Polyclonal Antibody at dilution of 1:325  
**Calculated Mw:36kDa**



Immunohistochemistry of paraffin-embedded Human liver cancer using ATG3 Polyclonal Antibody at dilution of 1:30



Immunohistochemistry of paraffin-embedded Human gastric cancer using ATG3 Polyclonal Antibody at dilution of 1:30

### Preparation & Storage

**Storage** Store at -20°C. Avoid freeze / thaw cycles.

### For Research Use Only

## Background

This gene encodes a ubiquitin-like-conjugating enzyme and is a component of ubiquitination-like systems involved in autophagy, the process of degradation, turnover and recycling of cytoplasmic constituents in eukaryotic cells. This protein is known to play a role in regulation of autophagy during cell death. A pseudogene of this gene is located on chromosome 20. Alternative splicing results in multiple transcript variants encoding different isoforms.