

## ARFGAP1 Polyclonal Antibody

Catalog No. E-AB-14599

**Note:** Centrifuge before opening to ensure complete recovery of vial contents.

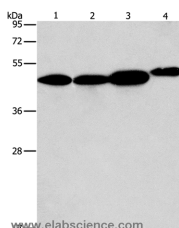
### Description

<b>Reactivity</b>	Human,Mouse
<b>Immunogen</b>	Recombinant protein of human ARFGAP1
<b>Host</b>	Rabbit
<b>Isotype</b>	IgG
<b>Purification</b>	Affinity purification
<b>Conjugation</b>	Unconjugated
<b>Buffer</b>	PBS with 0.05% sodium azide and 50% glycerol, PH7.4

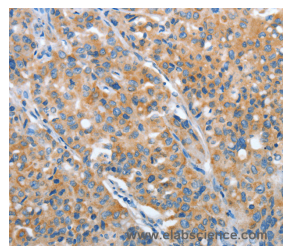
### Applications Recommended Dilution

<b>WB</b>	1:1000-1:5000
<b>IHC</b>	1:25-1:100

### Data



Western Blot analysis of 293T, A549, PC3 and NIH/3T3 cell using ARFGAP1 Polyclonal Antibody at dilution of 1:600  
**Calculated Mw:45kDa**



Immunohistochemistry of paraffin-embedded Human lung cancer using ARFGAP1 Polyclonal Antibody at dilution of 1:30

### Preparation & Storage

**Storage** Store at -20°C. Avoid freeze / thaw cycles.

### Background

The protein encoded by this gene is a GTPase-activating protein (GAP) which associates with the Golgi apparatus and which interacts with ADP-ribosylation factor 1 (ARF1).The encoded protein promotes hydrolysis of ARF1-bound GTP and is required for the dissociation of coat proteins from Golgi-derived membranes and vesicles.Dissociation of the coat proteins is required for the fusion of these vesicles with target compartments.The activity of this protein is stimulated by phosphoinositides and inhibited by phosphatidylcholine.Two transcript variants encoding different isoforms have been found for this gene.

### For Research Use Only