

## GDPD5 Polyclonal Antibody

**Catalog No.** E-AB-14625

*Note:* Centrifuge before opening to ensure complete recovery of vial contents.

### Description

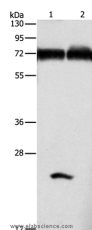
<b>Reactivity</b>	Human, Mouse
<b>Immunogen</b>	Recombinant protein of human GDPD5
<b>Host</b>	Rabbit
<b>Isotype</b>	IgG
<b>Purification</b>	Affinity purification
<b>Conjugation</b>	Unconjugated
<b>Buffer</b>	PBS with 0.05% sodium azide and 50% glycerol, PH7.4

### Applications

### Recommended Dilution

**WB** 1:500-1:2000

### Data



Western Blot analysis of Mouse pancreas and Human fetal brain tissue using GDPD5 Polyclonal Antibody at dilution of 1:600

**Calculated Mw:69kDa**

### Preparation & Storage

**Storage** Store at -20°C. Avoid freeze / thaw cycles.

### Background

Glycerophosphodiester phosphodiesterases, such as GDPD5, are involved in glycerol metabolism. Promotes neurite formation. Cooperates with PRDX1 to drive postmitotic motor neuron differentiation. The glycerophosphodiester phosphodiesterase activity may be required for its role in neuronal differentiation. May contribute to the osmotic regulation of cellular glycerophosphocholine.

### For Research Use Only