

MYLK3 Polyclonal Antibody

Catalog No. E-AB-14697

Note: Centrifuge before opening to ensure complete recovery of vial contents.

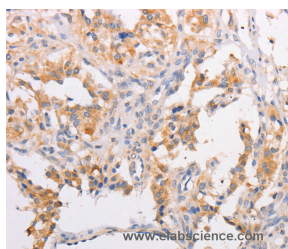
Description

Reactivity	Human,Mouse,Rat
Immunogen	Recombinant protein of human MYLK3
Host	Rabbit
Isotype	IgG
Purification	Affinity purification
Conjugation	Unconjugated
Buffer	PBS with 0.05% sodium azide and 50% glycerol, PH7.4

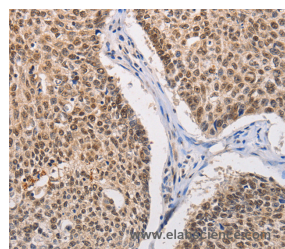
Applications Recommended Dilution

IHC 1:25-1:100

Data



Immunohistochemistry of paraffin-embedded Human thyroid cancer tissue using MYLK3 Polyclonal Antibody at dilution 1:30



Immunohistochemistry of paraffin-embedded Human lung cancer tissue using MYLK3 Polyclonal Antibody at dilution 1:30

Preparation & Storage

Storage Store at -20°C. Avoid freeze / thaw cycles.

Background

YLK3 (Myosin light chain kinase 3) is a 795 amino acid cardiac-specific protein that contains one protein kinase domain and belongs to the protein kinase superfamily. Like other MYLK kinases, MYLK3 is thought to play a role in smooth muscle contraction, specifically using magnesium as a cofactor to catalyze the ATP-dependent phosphorylation of Myosin light chain proteins. Additionally, MYLK3 may regulate sarcomere assembly in heart tissue, possibly mediating proper heart function.

For Research Use Only