

NEK8 Polyclonal Antibody

Catalog No. E-AB-14701

Note: Centrifuge before opening to ensure complete recovery of vial contents.

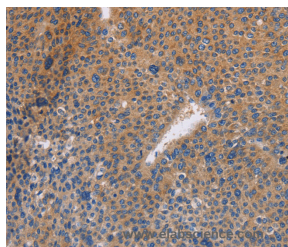
Description

Reactivity	Human,Mouse,Rat
Immunogen	Recombinant protein of human NEK8
Host	Rabbit
Isotype	IgG
Purification	Affinity purification
Conjugation	Unconjugated
Buffer	PBS with 0.05% sodium azide and 50% glycerol, PH7.4

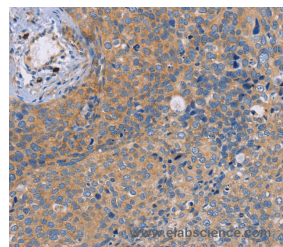
Applications Recommended Dilution

IHC 1:50-1:200

Data



Immunohistochemistry of paraffin-embedded Human liver cancer tissue using NEK8 Polyclonal Antibody at dilution 1:30



Immunohistochemistry of paraffin-embedded Human cervical cancer tissue using NEK8 Polyclonal Antibody at dilution 1:30

Preparation & Storage

Storage Store at -20°C. Avoid freeze / thaw cycles.

Background

This gene encodes a member of the serine/threonine protein kinase family related to NIMA (never in mitosis, gene A) of *Aspergillus nidulans*. The encoded protein may play a role in cell cycle progression from G2 to M phase. Mutations in the related mouse gene are associated with a disease phenotype that closely parallels the juvenile autosomal recessive form of polycystic kidney disease in humans.

For Research Use Only