

THOC7 Polyclonal Antibody

Catalog No. E-AB-14720

Note: Centrifuge before opening to ensure complete recovery of vial contents.

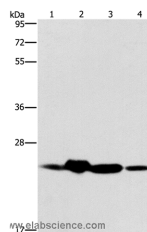
Description

| | |
|---------------------|---|
| Reactivity | Human, Mouse |
| Immunogen | Recombinant protein of human THOC7 |
| Host | Rabbit |
| Isotype | IgG |
| Purification | Affinity purification |
| Conjugation | Unconjugated |
| Buffer | PBS with 0.05% sodium azide and 50% glycerol, PH7.4 |

Applications Recommended Dilution

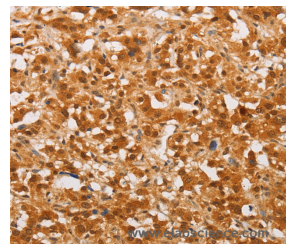
| | |
|------------|--------------|
| WB | 1:500-1:2000 |
| IHC | 1:50-1:200 |

Data

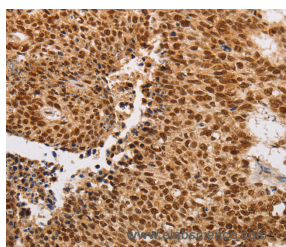


Western Blot analysis of Mouse spleen and Human fetal liver tissue, hela cell and Human fetal brain tissue using THOC7 Polyclonal Antibody at dilution of 1:450

Calculated Mw:24kDa



Immunohistochemistry of paraffin-embedded Human thyroid cancer using THOC7 Polyclonal Antibody at dilution of 1:30



Immunohistochemistry of paraffin-embedded Human lung cancer using THOC7 Polyclonal Antibody at dilution of 1:30

Preparation & Storage

For Research Use Only

Storage Store at -20°C. Avoid freeze / thaw cycles.

Background

NIF3L1 BP1 (Ngg1-interacting factor 3-like 1 binding protein 1), also known as THOC7 (THO complex subunit 7 homolog), fSAP24 or hTREX30, is a 204 amino acid cytoplasmic and nuclear protein that belongs to the THOC7 family and interacts with NIF3L1. NIF3L1 BP1 is a component of the THO/TREX complex that is recruited to transcribed genes and travels along with RNA polymerase II (Pol II) during elongation, coupling Pol II with RNA splicing and export factors. The THO/TREX complex also plays a role in the export of Kaposi's sarcoma-associated herpesvirus (KSHV) intronless mRNAs and infectious virus production. The gene that encodes NIF3L1 BP1 maps to human chromosome 3p14.1.