

## EIF2AK4 Polyclonal Antibody

**Catalog No.** E-AB-14733

**Note:** Centrifuge before opening to ensure complete recovery of vial contents.

### Description

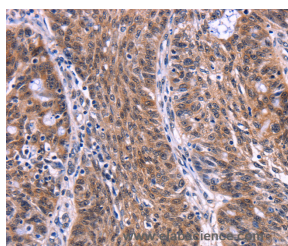
<b>Reactivity</b>	Human, Mouse
<b>Immunogen</b>	Recombinant protein of human EIF2AK4
<b>Host</b>	Rabbit
<b>Isotype</b>	IgG
<b>Purification</b>	Affinity purification
<b>Conjugation</b>	Unconjugated
<b>Buffer</b>	PBS with 0.05% sodium azide and 50% glycerol, PH7.4

### Applications

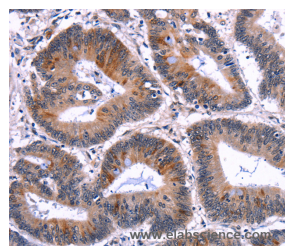
### Recommended Dilution

**IHC** 1:50-1:200

### Data



Immunohistochemistry of paraffin-embedded Human ovarian cancer tissue using EIF2AK4 Polyclonal Antibody at dilution 1:50



Immunohistochemistry of paraffin-embedded Human colon cancer tissue using EIF2AK4 Polyclonal Antibody at dilution 1:50

### Preparation & Storage

**Storage** Store at -20°C. Avoid freeze / thaw cycles.

### Background

EIF2AK4 belongs to a family of kinases that phosphorylate the alpha subunit of eukaryotic translation initiation factor-2 (EIF2S1; MIM 603907) to downregulate protein synthesis in response to varied cellular stresses

### For Research Use Only