

## PGK1 Polyclonal Antibody

Catalog No. E-AB-14734

**Note:** Centrifuge before opening to ensure complete recovery of vial contents.

### Description

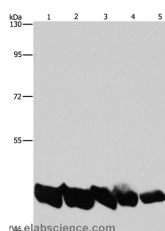
<b>Reactivity</b>	Human,Mouse,Rat
<b>Immunogen</b>	Recombinant protein of human PGK1
<b>Host</b>	Rabbit
<b>Isotype</b>	IgG
<b>Purification</b>	Affinity purification
<b>Conjugation</b>	Unconjugated
<b>Buffer</b>	PBS with 0.05% sodium azide and 50% glycerol, PH7.4

### Applications

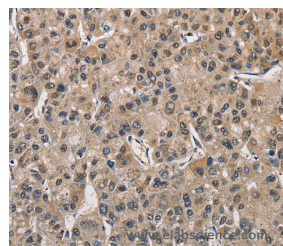
### Recommended Dilution

<b>WB</b>	1:1000-1:5000
<b>IHC</b>	1:50-1:200

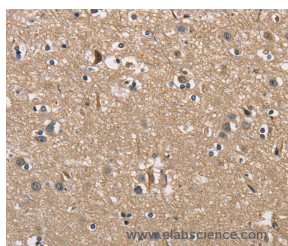
### Data



Western Blot analysis of A549 and hela cell, Mouse liver and Human liver tissue, hepG2 cell using PGK1 Polyclonal Antibody at dilution of 1:850  
**Calculated Mw:45kDa**



Immunohistochemistry of paraffin-embedded Human liver cancer using PGK1 Polyclonal Antibody at dilution of 1:40



Immunohistochemistry of paraffin-embedded Human brain using PGK1 Polyclonal Antibody at dilution of 1:40

### Preparation & Storage

**Storage** Store at -20°C. Avoid freeze / thaw cycles.

### For Research Use Only

## Background

The protein encoded by this gene is a glycolytic enzyme that catalyzes the conversion of 1,3-diphosphoglycerate to 3-phosphoglycerate. The encoded protein may also act as a cofactor for polymerase alpha. This gene lies on the X-chromosome, while a related pseudogene also has been found on the X-chromosome and another on chromosome 19.