

## SPHK2 Polyclonal Antibody

Catalog No. E-AB-14745

**Note:** Centrifuge before opening to ensure complete recovery of vial contents.

### Description

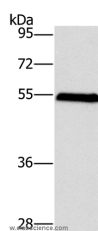
<b>Reactivity</b>	Human, Mouse
<b>Immunogen</b>	Recombinant protein of human SPHK2
<b>Host</b>	Rabbit
<b>Isotype</b>	IgG
<b>Purification</b>	Affinity purification
<b>Conjugation</b>	Unconjugated
<b>Buffer</b>	PBS with 0.05% sodium azide and 50% glycerol, PH7.4

### Applications

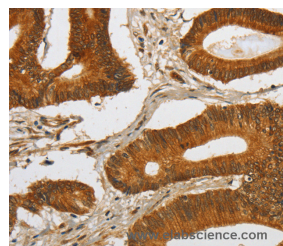
### Recommended Dilution

<b>WB</b>	1:200-1:1000
<b>IHC</b>	1:100-1:300

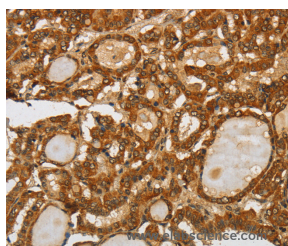
### Data



Western Blot analysis of Mouse liver tissue using SPHK2 Polyclonal Antibody at dilution of 1:200  
**Calculated Mw:69kDa**



Immunohistochemistry of paraffin-embedded Human colon cancer using SPHK2 Polyclonal Antibody at dilution of 1:80



Immunohistochemistry of paraffin-embedded Human thyroid cancer using SPHK2 Polyclonal Antibody at dilution of 1:80

### Preparation & Storage

**Storage** Store at -20°C. Avoid freeze / thaw cycles.

### Background

### For Research Use Only

This gene encodes one of two sphingosine kinase isozymes that catalyze the phosphorylation of sphingosine into sphingosine 1-phosphate. Sphingosine 1-phosphate mediates many cellular processes including migration, proliferation and apoptosis, and also plays a role in several types of cancer by promoting angiogenesis and tumorigenesis. The encoded protein may play a role in breast cancer proliferation and chemoresistance. Alternatively spliced transcript variants encoding multiple isoforms have been observed for this gene.