

ABI3BP Polyclonal Antibody

Catalog No. E-AB-14758

Note: Centrifuge before opening to ensure complete recovery of vial contents.

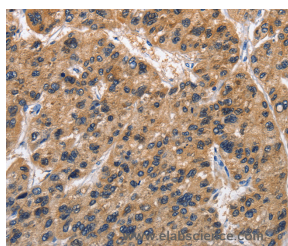
Description

Reactivity	Human
Immunogen	Recombinant protein of human ABI3BP
Host	Rabbit
Isotype	IgG
Purification	Affinity purification
Conjugation	Unconjugated
Buffer	PBS with 0.05% sodium azide and 50% glycerol, PH7.4

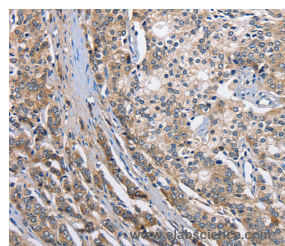
Applications Recommended Dilution

IHC	1:50-1:200
------------	------------

Data



Immunohistochemistry of paraffin-embedded Human liver cancer tissue using ABI3BP Polyclonal Antibody at dilution 1:50



Immunohistochemistry of paraffin-embedded Human prostate cancer tissue using ABI3BP Polyclonal Antibody at dilution 1:50

Preparation & Storage

Storage Store at -20°C. Avoid freeze / thaw cycles.

Background

A target of NESH-SH3/Abi3bp (TARSH) was originally identified as an SH3 domain-binding molecule of the NESH-SH3/Abi3 protein that is involved in Rac-dependent actin polymerization. In recent studies, TARSH gene expression was dramatically induced in mouse embryonic fibroblasts (MEFs) replicative senescence and suppressed in human lung carcinoma specimens and thyroid carcinomas. However, the molecular mechanism underlying the regulation of TARSH in tumorigenesis remains unclear.

For Research Use Only