

## ATP2C1 Polyclonal Antibody

**Catalog No.** E-AB-14777

*Note:* Centrifuge before opening to ensure complete recovery of vial contents.

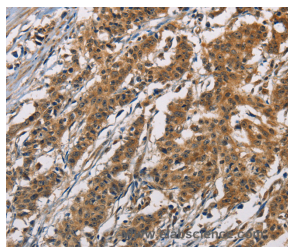
### Description

<b>Reactivity</b>	Human,Mouse,Rat
<b>Immunogen</b>	Recombinant protein of human ATP2C1
<b>Host</b>	Rabbit
<b>Isotype</b>	IgG
<b>Purification</b>	Affinity purification
<b>Conjugation</b>	Unconjugated
<b>Buffer</b>	PBS with 0.05% sodium azide and 50% glycerol, PH7.4

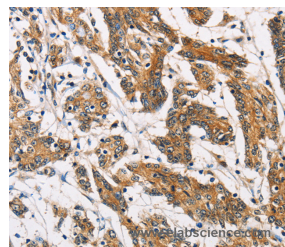
### Applications Recommended Dilution

**IHC** 1:50-1:200

### Data



Immunohistochemistry of paraffin-embedded Human gastric cancer tissue using ATP2C1 Polyclonal Antibody at dilution 1:60



Immunohistochemistry of paraffin-embedded Human colon cancer tissue using ATP2C1 Polyclonal Antibody at dilution 1:60

### Preparation & Storage

**Storage** Store at -20°C. Avoid freeze / thaw cycles.

### Background

The protein encoded by this gene belongs to the family of P-type cation transport ATPases. This magnesium-dependent enzyme catalyzes the hydrolysis of ATP coupled with the transport of calcium ions. Defects in this gene cause Hailey-Hailey disease, an autosomal dominant disorder. Alternatively spliced transcript variants encoding different isoforms have been identified.

### For Research Use Only