

PPP3CA Polyclonal Antibody

Catalog Number:E-AB-14813

Note: Centrifuge before opening to ensure complete recovery of vial contents.

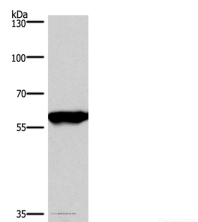
Description

Reactivity	Human,Mouse,Rat
Immunogen	Recombinant protein of human PPP3CA
Host	Rabbit
Isotype	IgG
Purification	Affinity purification
Conjugation	Unconjugated
Formulation	PBS with 0.05% sodium azide and 50% glycerol, PH7.4

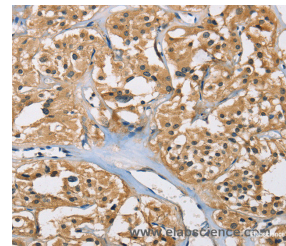
Applications Recommended Dilution

WB	1:500-1:2000
IHC	1:25-1:100

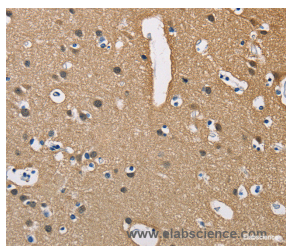
Data



Western Blot analysis of Mouse brain tissue using PPP3CA Polyclonal Antibody at dilution of 1:900
Calculated Mw:59kDa



Immunohistochemistry of paraffin-embedded Human thyroid cancer using PPP3CA Polyclonal Antibody at dilution of 1:40



Immunohistochemistry of paraffin-embedded Human brain using PPP3CA Polyclonal Antibody at dilution of 1:40

Preparation & Storage

Storage Store at -20°C. Avoid freeze / thaw cycles.

Background

Protein phosphatase 3, catalytic subunit, alpha isozyme is a protein that in humans is encoded by the PPP3CA gene. Calcium-dependent, calmodulin-stimulated protein phosphatase. Many of the substrates contain a PxIxIT motif. This subunit may have a role in the calmodulin activation of calcineurin. Dephosphorylates DNM1L, HSPB1 and SSH1.

For Research Use Only

A Reliable Research Partner in Life Science and Medicine

Toll-free: 1-888-852-8623

Web: www.elabscience.com

Tel: 1-832-243-6086

Email: techsupport@elabscience.com

Fax: 1-832-243-6017