

CD160 Polyclonal Antibody

Catalog Number:E-AB-14838

Note: Centrifuge before opening to ensure complete recovery of vial contents.

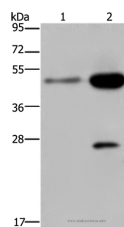
Description

Reactivity	Human
Immunogen	Recombinant protein of human CD160
Host	Rabbit
Isotype	IgG
Purification	Affinity purification
Conjugation	Unconjugated
Formulation	PBS with 0.05% sodium azide and 50% glycerol, PH7.4

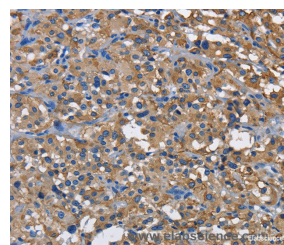
Applications Recommended Dilution

WB	1:500-1:2000
IHC	1:50-1:200

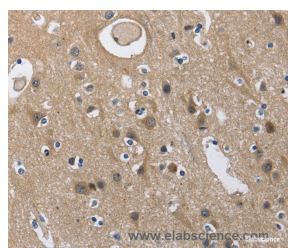
Data



Western Blot analysis of 231 and Hela cell using CD160 Polyclonal Antibody at dilution of 1:300
Calculated Mw:20kDa



Immunohistochemistry of paraffin-embedded Human thyroid cancer using CD160 Polyclonal Antibody at dilution of 1:60



Immunohistochemistry of paraffin-embedded Human brain using CD160 Polyclonal Antibody at dilution of 1:60

Preparation & Storage

Storage Store at -20°C. Avoid freeze / thaw cycles.

Background

CD160 is an 27 kDa glycoprotein which was initially identified with the monoclonal antibody BY55. Its expression is tightly associated with peripheral blood NK cells and CD8 T lymphocytes with cytolytic effector activity. The cDNA sequence of CD160 predicts a cysteine-rich, glycosylphosphatidylinositol-anchored protein of 181 amino acids with a single Ig-like domain weakly homologous to KIR2DL4 molecule. CD160 is expressed at the cell surface as a tightly

For Research Use Only

A Reliable Research Partner in Life Science and Medicine

Toll-free: 1-888-852-8623

Web: www.elabscience.com

Tel: 1-832-243-6086

Email: techsupport@elabscience.com

Fax: 1-832-243-6017

CD160 Polyclonal Antibody

Catalog Number:E-AB-14838



disulfide-linked multimer. RNA blot analysis revealed CD160 mRNAs of 1.5 and 1.6 kb whose expression was highly restricted to circulating NK and T cells, spleen and small intestine.

For Research Use Only

A Reliable Research Partner in Life Science and Medicine

Toll-free: 1-888-852-8623

Web: www.elabscience.com

Tel: 1-832-243-6086

Email: techsupport@elabscience.com

Fax: 1-832-243-6017