

# CEP97 Polyclonal Antibody

Catalog Number:E-AB-14866

**Note:** Centrifuge before opening to ensure complete recovery of vial contents.

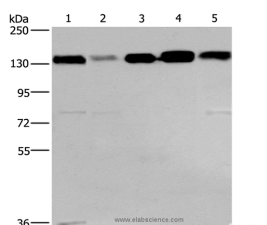
## Description

<b>Reactivity</b>	Human
<b>Immunogen</b>	Recombinant protein of human CEP97
<b>Host</b>	Rabbit
<b>Isotype</b>	IgG
<b>Purification</b>	Affinity purification
<b>Conjugation</b>	Unconjugated
<b>Formulation</b>	PBS with 0.05% sodium azide and 50% glycerol, PH7.4

## Applications Recommended Dilution

<b>WB</b>	1:500-1:2000
-----------	--------------

## Data



Western Blot analysis of 293T, hela, PC3, lovo and A172 cell using CEP97 Polyclonal Antibody at dilution of 1:500

**Calculated Mw:97kDa**

## Preparation & Storage

**Storage** Store at -20°C. Avoid freeze / thaw cycles.

## Background

Centrosomal protein of 97 kDa (Cep97), also known as leucine-rich repeat and IQ domain-containing protein 2 (LRR1Q2), is a protein that in humans is encoded by the CEP97 gene. Acts as a key negative regulator of ciliogenesis in collaboration with CCP110 by capping the mother centriole thereby preventing cilia formation. Required for recruitment of CCP110 to the centrosome. Interacts with CALM1, CEP76 and CCP110. Via its interaction with CCP110, may indirectly interact with HERC2 and NEURL4. Interacts with KIF24.

## For Research Use Only

A Reliable Research Partner in Life Science and Medicine

Toll-free: 1-888-852-8623

Web: [www.elabscience.com](http://www.elabscience.com)

Tel: 1-832-243-6086

Email: [techsupport@elabscience.com](mailto:techsupport@elabscience.com)

Fax: 1-832-243-6017