

CLUAP1 Polyclonal Antibody

Catalog Number:E-AB-14881

Note: Centrifuge before opening to ensure complete recovery of vial contents.

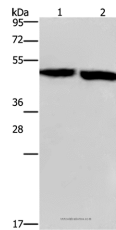
Description

Reactivity	Human,Mouse,Rat
Immunogen	Recombinant protein of human CLUAP1
Host	Rabbit
Isotype	IgG
Purification	Affinity purification
Conjugation	Unconjugated
Formulation	PBS with 0.05% sodium azide and 50% glycerol, PH7.4

Applications Recommended Dilution

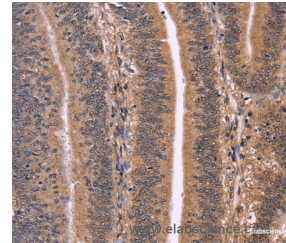
WB	1:500-1:2000
IHC	1:100-1:300

Data

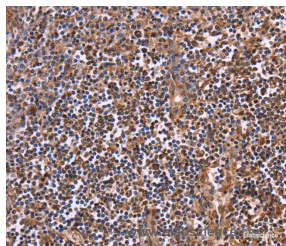


Western Blot analysis of Mouse stomach and brain tissue using CLUAP1 Polyclonal Antibody at dilution of 1:500

Calculated Mw:48kDa



Immunohistochemistry of paraffin-embedded Human colon cancer using CLUAP1 Polyclonal Antibody at dilution of 1:50



Immunohistochemistry of paraffin-embedded Human tonsil using CLUAP1 Polyclonal Antibody at dilution of 1:50

Preparation & Storage

Storage Store at -20°C. Avoid freeze / thaw cycles.

Background

The protein encoded by this gene contains a single coiled-coil region. Alternative splicing results in multiple transcript variants and protein isoforms.

For Research Use Only

A Reliable Research Partner in Life Science and Medicine

Toll-free: 1-888-852-8623

Web: www.elabscience.com

Tel: 1-832-243-6086

Email: techsupport@elabscience.com

Fax: 1-832-243-6017