

CPB1 Polyclonal Antibody

Catalog Number:E-AB-14889

Note: Centrifuge before opening to ensure complete recovery of vial contents.

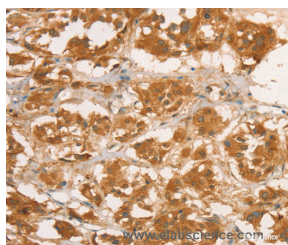
Description

Reactivity	Human,Rat
Immunogen	Recombinant protein of human CPB1
Host	Rabbit
Isotype	IgG
Purification	Affinity purification
Conjugation	Unconjugated
Formulation	PBS with 0.05% sodium azide and 50% glycerol, PH7.4

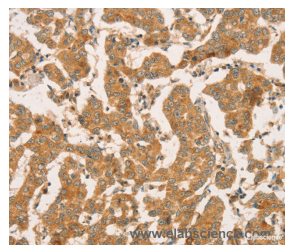
Applications Recommended Dilution

IHC	1:100-1:300
------------	-------------

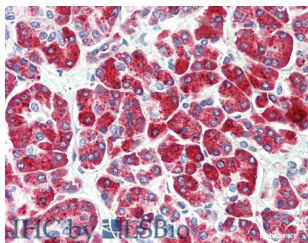
Data



Immunohistochemistry of paraffin-embedded Human thyroid cancer tissue using CPB1 Polyclonal Antibody at dilution of 1:50



Immunohistochemistry of paraffin-embedded Human breast cancer using CPB1 Polyclonal Antibody at dilution of 1:50



Immunohistochemistry of paraffin-embedded Human Pancreas using CPB1 Polyclonal Antibody at dilution of 1:50(Elabscience® Product Detected by Lifespan).

Preparation & Storage

Storage Store at -20°C. Avoid freeze / thaw cycles.

Background

Three different procarboxypeptidases A and two different procarboxypeptidases B have been isolated. The B1 and B2 forms differ from each other mainly in isoelectric point. Carboxypeptidase B1 is a highly tissue-specific protein and is a useful serum marker for acute pancreatitis and dysfunction of pancreatic transplants. It is not elevated in pancreatic carcinoma.

For Research Use Only

A Reliable Research Partner in Life Science and Medicine

Toll-free: 1-888-852-8623

Web: www.elabscience.com

Tel: 1-832-243-6086

Email: techsupport@elabscience.com

Fax: 1-832-243-6017