

## MIER2 Polyclonal Antibody

**Catalog No.** E-AB-15208

*Note:* Centrifuge before opening to ensure complete recovery of vial contents.

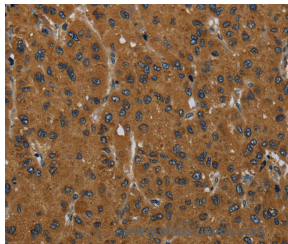
### Description

<b>Reactivity</b>	Human,Mouse
<b>Immunogen</b>	Recombinant protein of human MIER2
<b>Host</b>	Rabbit
<b>Isotype</b>	IgG
<b>Purification</b>	Affinity purification
<b>Conjugation</b>	Unconjugated
<b>Buffer</b>	PBS with 0.05% sodium azide and 50% glycerol, PH7.4

### Applications Recommended Dilution

**IHC** 1:100-1:300

### Data



Immunohistochemistry of paraffin-embedded Human liver cancer tissue using MIER2 Polyclonal Antibody at dilution 1:60

### Preparation & Storage

**Storage** Store at -20°C. Avoid freeze / thaw cycles.

### Background

MIER2(mesoderm induction early response 1, family member 2), also known as Mi-er2 or KIAA1193, is a protein that in humans is encoded by the MIER2 gene. It is a transcriptional repressor.

### For Research Use Only