

RASSF3 Polyclonal Antibody

Catalog No. E-AB-15334

Note: Centrifuge before opening to ensure complete recovery of vial contents.

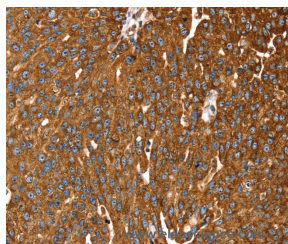
Description

Reactivity	Human, Mouse
Immunogen	Recombinant protein of human RASSF3
Host	Rabbit
Isotype	IgG
Purification	Affinity purification
Conjugation	Unconjugated
Buffer	PBS with 0.05% sodium azide and 50% glycerol, PH7.4

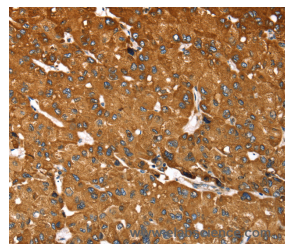
Applications Recommended Dilution

IHC 1:30-1:150

Data



Immunohistochemistry of paraffin-embedded Human breast cancer tissue using RASSF3 Polyclonal Antibody at dilution 1:35



Immunohistochemistry of paraffin-embedded Human liver cancer tissue using RASSF3 Polyclonal Antibody at dilution 1:35

Preparation & Storage

Storage Store at -20°C. Avoid freeze / thaw cycles.

Background

The RAS oncogene (MIM 190020) is mutated in nearly one-third of all human cancers. Members of the RAS superfamily are plasma membrane GTP-binding proteins that modulate intracellular signal transduction pathways. A subfamily of RAS effectors, including RASSF3, share a RAS association (RA) domain.

For Research Use Only