

## SLC25A13 Polyclonal Antibody

**Catalog No.** E-AB-15390

**Note:** Centrifuge before opening to ensure complete recovery of vial contents.

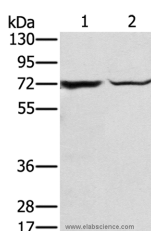
### Description

<b>Reactivity</b>	Human, Mouse
<b>Immunogen</b>	Recombinant protein of human SLC25A13
<b>Host</b>	Rabbit
<b>Isotype</b>	IgG
<b>Purification</b>	Affinity purification
<b>Conjugation</b>	Unconjugated
<b>Buffer</b>	PBS with 0.05% sodium azide and 50% glycerol, PH7.4

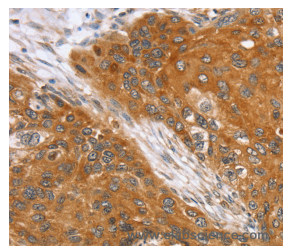
### Applications Recommended Dilution

<b>WB</b>	1:500-1:2000
<b>IHC</b>	1:25-1:100

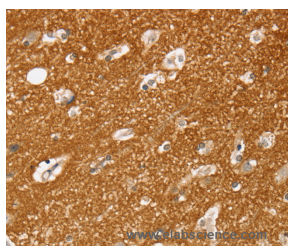
### Data



Western Blot analysis of Mouse liver tissue and hepg2 cell using SLC25A13 Polyclonal Antibody at dilution of 1:450  
**Calculated Mw:74kDa**



Immunohistochemistry of paraffin-embedded Human esophagus cancer using SLC25A13 Polyclonal Antibody at dilution of 1:35



Immunohistochemistry of paraffin-embedded Human brain using SLC25A13 Polyclonal Antibody at dilution of 1:35

### Preparation & Storage

**Storage** Store at -20°C. Avoid freeze / thaw cycles.

### For Research Use Only

## Background

This gene is a member of the mitochondrial carrier family. The encoded protein contains four EF-hand  $\text{Ca}^{2+}$  binding motifs in the N-terminal domain, and localizes to mitochondria. The protein catalyzes the exchange of aspartate for glutamate and a proton across the inner mitochondrial membrane, and is stimulated by calcium on the external side of the inner mitochondrial membrane. Mutations in this gene result in citrullinemia, type II. Multiple transcript variants encoding different isoforms have been found for this gene.